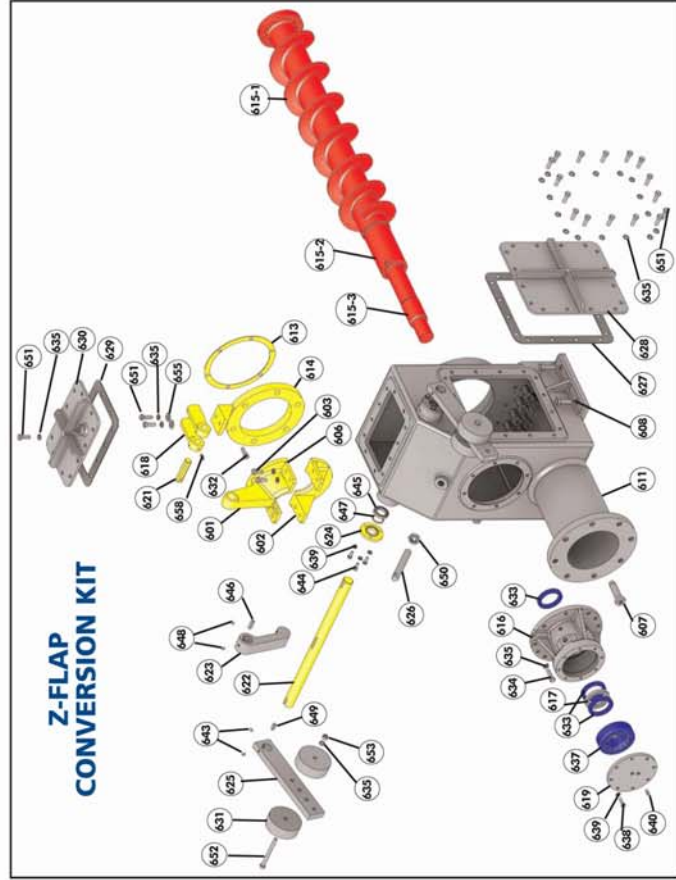


# FULLER-KINYON™ TYPE H PUMP w/2 PC SCREW / Z-FLAP - PARTS IDENTIFICATION

## Z-FLAP PARTS LIST

ITEM #	QTY	DESCRIPTION
601	1	FLAP VALVE - UPPER HALF
602	1	FLAP VALVE - LOWER HALF
603	4	HEX HEAD CAPSCREW
604	4	LOCKWASHER
607		AIR NOZZLES
608	4	HEX HEAD CAPSCREW
610	1	DISCHARGE HOUSING ASSEMBLY
611	1	FLAP SEAT GASKET
612	1	FLAP SEAT
613	1	FLAP SEAT
614	1	FLAP SEAT
615-1	1	FLAP Z-FLAP SCREW
615-2	1	SLEEVE
615-3	1	WEAR BLEED
616	1	BEARING HOUSING
617	1	LANTERN RING
618	1	BRACKET - FLAP VALVE
619	1	FLAP VALVE PIN
620	1	FLAP VALVE
621	1	BLOWOUT LEVER SHAFT
622	1	BLOWOUT LEVER
623	1	SEAL PLATE
624	2	SEAL PLATE
625	2	COUNTERWEIGHT ARM
626	1	STOP SCREW
627	2	COVER PLATE GASKET (SIDE)
628	2	COVER PLATE (SIDE)
629	1	COVER PLATE GASKET (TOP)
630	1	COVER PLATE (TOP)
631	4	COUNTERWEIGHT
632	6	HEX SOC. CAPSCREW
633	3	RADIAL LIP SEAL
634	8	HEX HEAD CAPSCREW
635	56	HELICAL SPRING LOCKWASHER
636	8	HEX HEAD CAPSCREW
637	1	SPHERICAL ROCKER BEARING
638	8	HEX HEAD CAPSCREW
639	14	HELICAL SPRING LOCKWASHER
640	1	PIPE PLUG
643	8	HEX SOC. SETSCREW
644	6	HEX HEAD CAPSCREW
645	2	SHAFT COLLAR
646	1	SO. KEY
647	2	O-RING / PACKING
648	2	HEX SOC. SETSCREW
649	2	SO. KEY
650	1	HEX JAM NUT
651	46	HEX HEAD CAPSCREW
652	2	HEX HEAD CAPSCREW
653	2	HEX NUT
654	1	FLAT WASHER
655	2	FLAT WASHER
656	1	SOC. SETSCREW



## Z-FLAP CONVERSION KIT

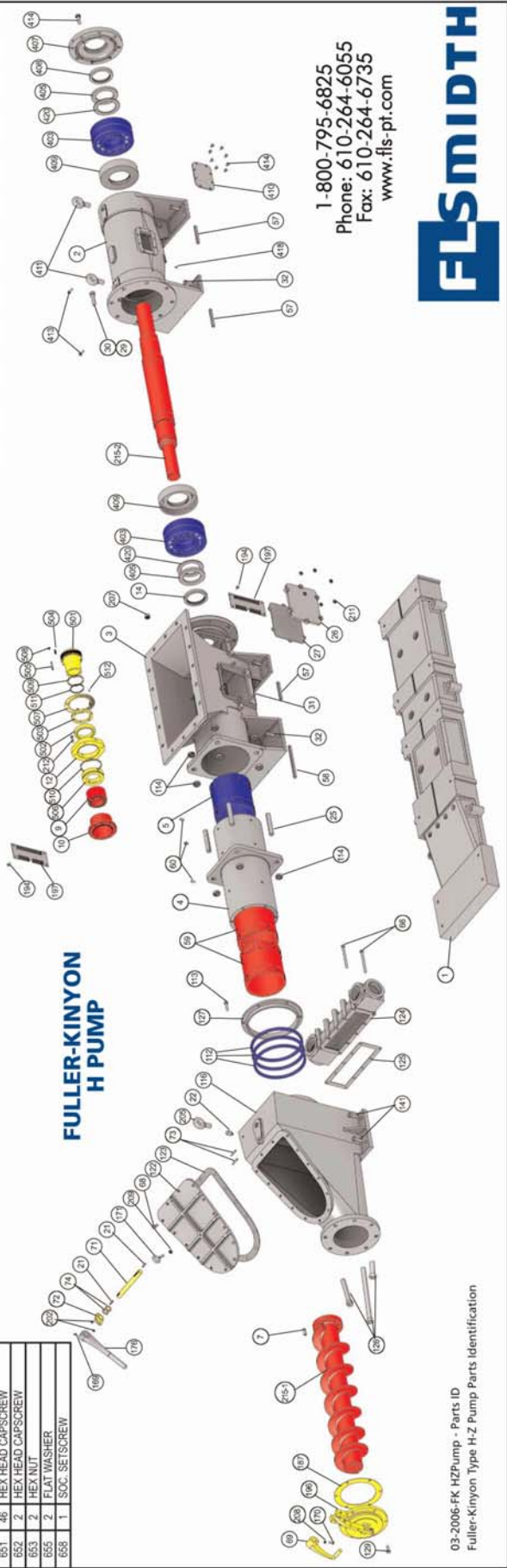
**RED: BASIC KIT**  
**YELLOW: OPTION TO BASIC KIT**  
**YELLOW + BLUE + RED = COMPLETE KIT**

**REMEMBER TO USE THE F-K PUMP SERIAL NUMBER WHEN ORDERING PARTS**

## H PUMP PARTS LIST

ITEM #	QTY	DESCRIPTION
170	1	SO. HD. SETSCREW
171	1	EYEBOLT
176	1	BLOWOUT HANDLE
187	1	GASKET
194	8	HEX HEAD CAPSCREW
196	1	FLAPPER VALVE ASSEMBLY
197	2	SEAL CHAMBER COVER
202	2	HEX NUT
205	1	EYEBOLT
207	4	HEX NUT
208	1	JAM NUT
209	1	JAM NUT
211	12	HEX NUT
212	4	HEX SOC. CAPSCREW
213-1	1	HZ F-K SCREW - DISCHARGE END
213-2	1	HZ F-K SCREW - SHAFT - DRIVE END
403	2	DOUBLE ROW BALL BEARING
405	2	LOCKNUT
407	1	BEARING HOUSING COVER
408	1	GREASE RETAINER
409	2	GREASE RETAINER
410	1	COVER PLATE
411	2	EYEBOLT
413	2	HEX SOC. SETSCREW
414	8	HEX HEAD CAPSCREW
415	8	HEX HEAD CAPSCREW
418	1	CAPLUG
420	2	LOCKWASHER
501	1	SEAL RING BUSHING #
502	1	SEAL RING # *
503	1	SEAL RING BACKING PLATE #
504	13	SEAL RING SPRING #
505	2	DRIVE PIN # *
506	1	HOPPER BUSHING # *
507	1	SPLIT FAN ASSEMBLY #
508	2	HEX NUT # *
509	1	O-RING # *
510	1	O-RING # *
511	1	O-RING # *
512	6	HEX SOC. BUTTON CAPSCREW #
126	1	BARREL PACKING GLAND
127	6	HEX HEAD CAPSCREW
128	4	HEX HEAD CAPSCREW
141	4	HEX HEAD CAPSCREW
168	1	SETSCREW

Items with # included in Seal Recp. Assembly  
 Items with \* included in Seal Repair Kit



## FULLER-KINYON H PUMP

1-800-795-6825  
 Phone: 610-264-6055  
 Fax: 610-264-6735  
 www.flsmidth.com



03-2006-FK HZ Pump - Parts ID  
 Fuller-Kinyon Type H-Z Pump Parts Identification