

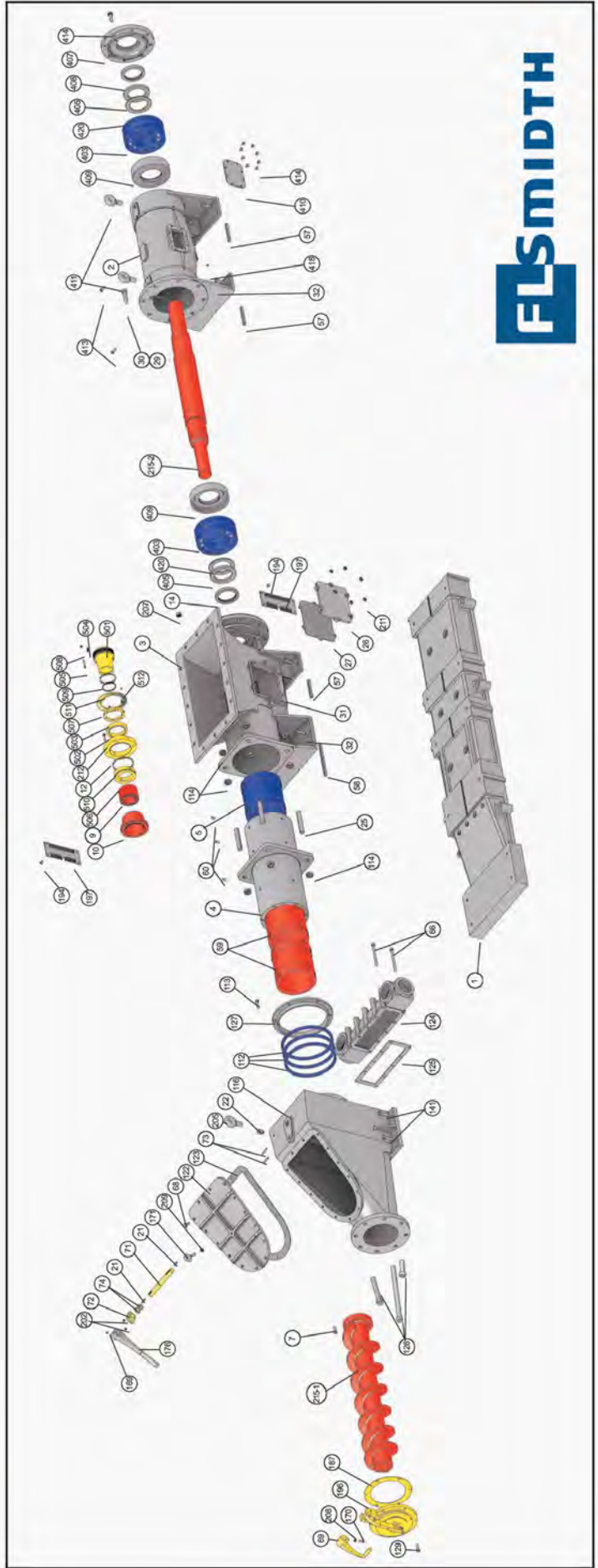
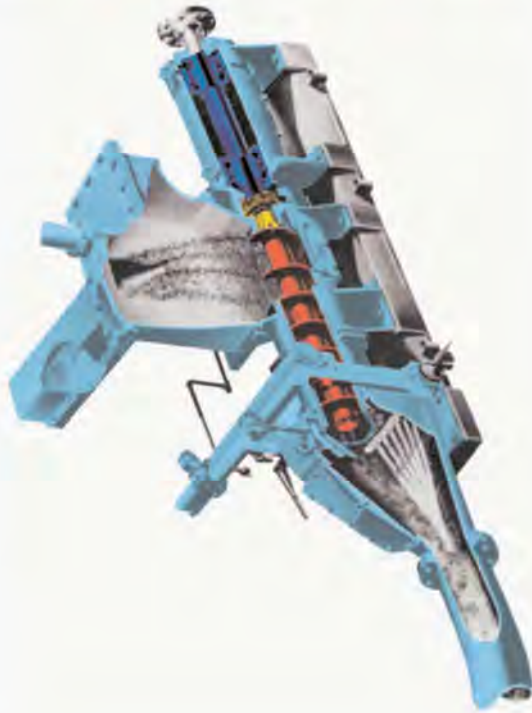
FULLER-KINYON TYPE H PUMP W/2 PC SCREW - PARTS IDENTIFICATION

H PUMP PARTS LIST

ITEM #	QTY	DESCRIPTION	ITEM #	QTY	DESCRIPTION	ITEM #	QTY	DESCRIPTION
1	1	BASE	60	9	SET SCREW	171	1	EYEBOLT
2	1	BEARING HOUSING	66	10	HEX HEAD CAPSCREW	176	1	BLOWOUT HANDLE
3	1	HOPPER	68	14	HEX HEAD CAPSCREW	187	1	GASKET
4	1	BARREL	69	1	BLOWOUT LEVER	184	8	HEX HEAD CAPSCREW
5	1	BARREL BUSHING - SOFT	71	1	BLOWOUT LEVER SHAFT	186	1	FLAPPER VALVE ASSEMBLY
6	1	BARREL BUSHING - HARD	72	1	PACKING GLAND	187	2	SEAL CHAMBER COVER
7	1	SEAL RING BUSHING #	73	2	PACKING GLAND STUDS	202	2	HEX NUT
8	1	SEAL RING BUSHING #	74	2	SO. PACKING	205	1	EYEBOLT
9	1	SCREW LOCKING ASSEMBLY	112	3	SO. PACKING	207	4	HEX NUT
10	1	SCREW LOCKING ASSEMBLY	113	6	HEX HEAD CAPSCREW	208	1	JAM NUT
11	1	HOPPER BUSHING COLLAR	114	12	JAM NUTS	209	1	JAM NUT
12	1	HOPPER BUSHING COLLAR	116	1	FLAPPER VALVE BODY	211	12	HEX NUT
13	1	GREASE RETAINER	118	1	COVER	212	4	HEX SOC. CAPSCREW
14	1	GREASE RETAINER	123	1	GASKET	215	1	EX. SCREW - DISCHARGE END
15	1	GREASE RETAINER	124	1	AIR MANIFOLD	215	1	EX. SCREW - DRIVE END
16	1	GREASE RETAINER	125	1	GASKET	403	2	DOUBLE ROW BALL BEARING
17	1	GREASE RETAINER	126	1	AIR NOZZLE	405	2	LOCKNUT
18	1	GREASE RETAINER	127	1	BARREL PACKING GLAND	407	1	BEARING HOUSING COVER
19	1	GREASE RETAINER	129	6	HEX HEAD CAPSCREW	408	1	GREASE RETAINER
20	1	GREASE RETAINER	141	4	HEX HEAD CAPSCREW	409	2	GREASE RETAINER
21	2	SO. KEY 1/4" LG.	144	1	SETScrew	410	1	COVER PLATE
22	1	GREASE CUP	169	1	SETScrew	411	2	EYEBOLT
23	1	HAND HOLE COVER	170	1	SO. HD. SETSCREW			
24	2	HAND HOLE COVER GASKET						
25	4	HEX HEAD CAPSCREW						
26	4	HEX HEAD CAPSCREW						
27	1	STUD						
28	1	HEX HEAD CAPSCREW						
29	1	HEX HEAD CAPSCREW						
30	1	HEX HEAD CAPSCREW						
31	12	STUD						
32	8	HEX HEAD CAPSCREW						
33	1	SO. KEY 6" LG.						
34	1	SO. KEY 9.25" LG.						
35	2	BARREL BUSHING - HARD						

RED: BASIC KIT
YELLOW: OPTION TO BASIC KIT
BLUE + RED + YELLOW = COMPLETE KIT

REMEMBER TO USE THE FK PUMP SERIAL NUMBER WHEN ORDERING PARTS



FLSMIDTH